



CONCEPT 2006

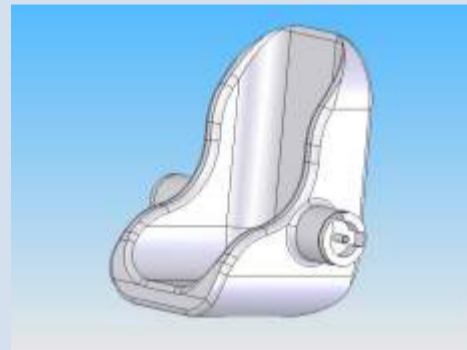
FINALIST

Wheelchair Baby Carrier... Aisha Pankhania

Patent Pending

The initial motivation for the project was to design a product that would benefit elderly disabled people. To help me understand the need better I held meetings with an occupational therapist where I learned of difficulties faced by a range of her patients.

However I was inspired by a story of a young mother involved in a car crash resulting in permanent injury to her legs. She was left reliant on a wheelchair for mobility, and needed constant assistance with her four month old son.



I resolved to design a product that would help a wheelchair dependent parent perform certain tasks independently, maintain close physical contact with their child reducing the need for home help and retaining the special bond between parent and child.

I aimed to design and develop a baby carrier specifically adapted to fit onto a standard NHS wheelchair.

The product had to carry a child safely, without placing excessive strain onto the wheelchair user's body or causing them any obstructions. The design had to provide hands free operation to allow manoeuvring of the wheelchair.



Research showed that there was nothing really available on the market apart from improvisations of household items by users or one off cumbersome and unwieldy conversions by NHS.

The product is designed to carry a child from birth up to the age of six months, with a maximum weight limit of 13kgs. It is safe to use for both the wheelchair user and the child.

The carrier looks contemporary and attractive, is portable, lightweight and easy for the wheelchair user to use independently.



It's easy to fit and uses a positive indication locking mechanism so that the user knows that the carrier is secure, either through the 'click' or visually.

My Wheelchair Baby Carrier is designed with safety in mind and when at pre-production final prototype stage will be tested to comply with all the relevant BS/EN and ISO standards. During the design process I tested 3D CAD models of the concept using Cosmos Analysis Wizard testing to various loads using different materials in a wide

I am delighted how this design project has turned out and I have many ideas to develop the concept further to assist the wheelchair dependent parent to care for baby around the home.

Aisha Pankhania
MOBABY

